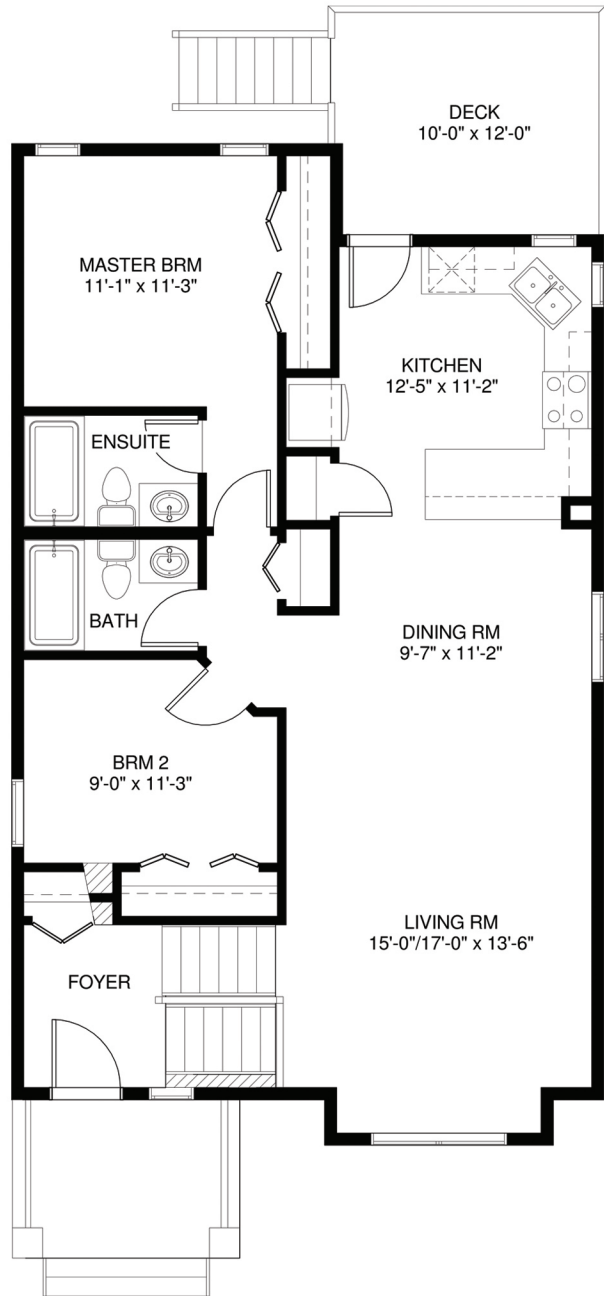
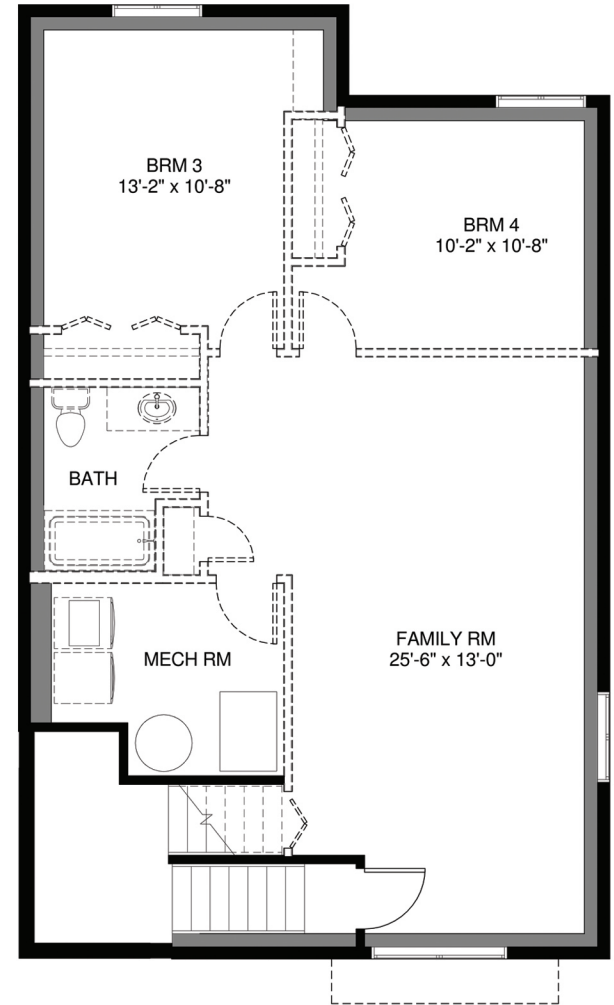


GRESHAM



MAIN FLOOR PLAN
1066 sq. ft.



LOWER FLOOR PLAN
FUTURE DEVELOPMENT
785 sq. ft.

HOME STYLE
Bi-level

1066 Square Feet

BEDROOMS
2

BATHROOMS
2

- Welcoming covered front veranda
- Spacious front foyer
- Open concept floorplan, great for entertaining
- 'U' shaped kitchen features eating bar, 4 stainless steel appliances, pantry and access to rear 10'x12' deck
- 2 nice sized bedrooms and 2 full bathrooms complete the main floor
- Lower floor future development includes; large family room, 2 bedrooms, 1 bathroom and a storage room

HOME PRICE

Including Home Site & GST

Home Site Address

Date

*Images are artist's conceptions only and may not exactly represent the base model specifications. Laebon reserves the right to alter or modify the plans and specifications without prior notice

